

# Community Conversation on Housing







1. Introduction
2. Tinde~USA Values
3. Tinde~USA, LLC
4. Tinde~USA Homes
5. Tinde~USA Manufacturing
6. Next steps ~ Collaboration?





*Lars Hanstad ~ NORLOM  
Tinde-USA, Lillehammer, Norway*



*Orlyn Kringstad ~ TowerVision 2025  
Tinde-USA, Tower, MN*



4. October 2023

Mr. Orlyn Arvid Kringstad  
**TowerVision 2025, LLC**  
PO Box 494  
Tower, MN 55790, USA

Dear Orlyn:

Thank you for your visit to Vinstra and Tinde Hytter in September. My staff and I enjoyed meeting your business partners, Lars, Luke, and Shawn, and visiting several of our construction sites with you.

We are pleased with our discussion about collaboration and terms of agreement with your group in the **Memorandum of Understanding**. I want to confirm to you and your collaborating partners in Minnesota, our agreement, and intention to sign the document soonest possible.

Tinde Hytter's management and board have great interest in both the export of our small homes and cottages to the USA and for participating in the production of our Tinde units in Tower, Minnesota. Tinde Hytter's management, our board, and company attorney are still reviewing the terms to make sure that they comply with Norwegian export regulations and USA building codes, an issue that your team has already clearly clarified.

We hope and expect to sign and have the MOU, including the revisions that we discussed, ready for your signature this week.

We look forward to continued cooperation and success with our collaboration in the future.

Warm Regards

**Audun Skattebo**

CEO Tinde Hytter AS  
Tlf.: +47 900 30 720



Tinde Hytter AS  
Lomovegen 21, 2640 Vinstra  
[Tindehytter.no](https://tindehytter.no)



**Audun Skattebo, CEO, Tinde Hytter AS, Norway**





# Building Floodwood

*Retaining Floodwood's  
Recreational Activities*





**Preserving Green Space With  
Responsible Development**



**Keep the Charm ~**  
**~ Retain the Character**





# Tinde-USA, LLC

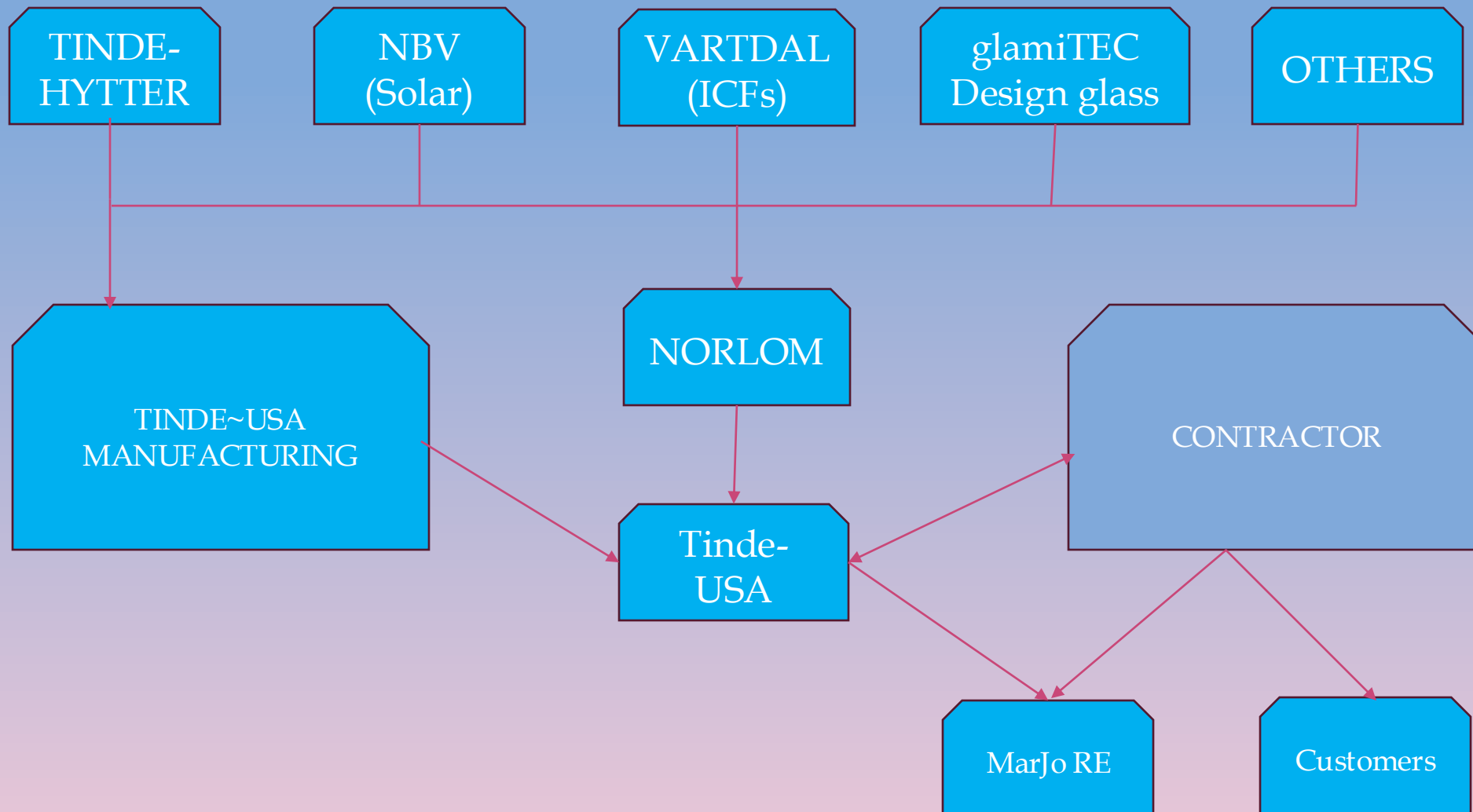
**Building more than houses**

---

**Building Resilient  
Economies**



# BUSINESS MODEL ~ TINDE USA





# Tinde Hytter A/S – Vinstra, Norway







**Spletthoff**











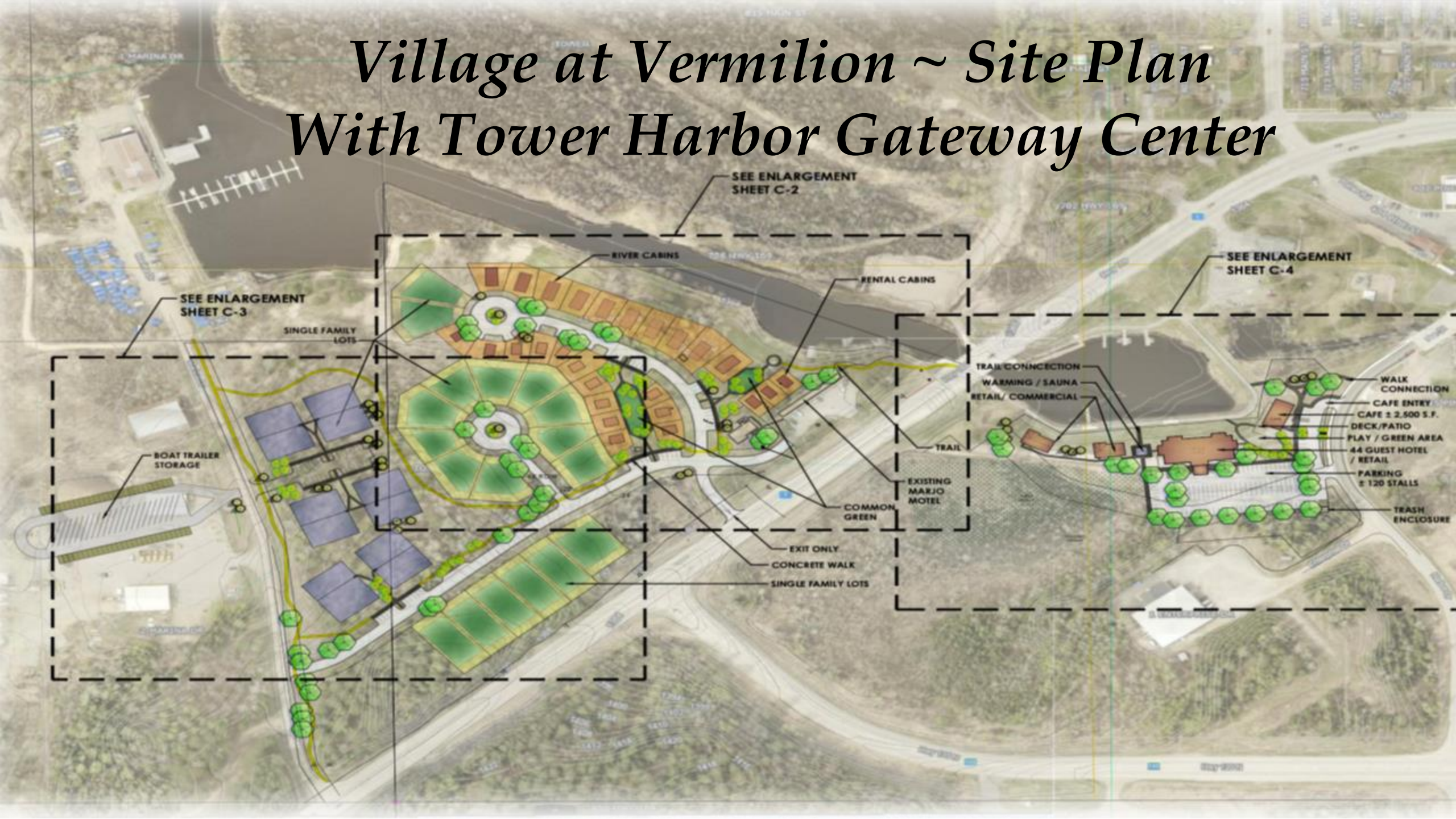








# *Village at Vermilion ~ Site Plan With Tower Harbor Gateway Center*







*Tinde Condominiums – four/six-plex*





*Tinde Condominiums – four/six-plex*





*Tinde Housing ~ Twin Homes*



# *Apartment buildings with 8 apartments*





# Solar Heat Collection Systems



Norsk BioVarme

Many people mix up the definition of solar collectors and panels, but the difference is significant. While collectors generate heating energy, solar panels produce electricity.



# Solar Heat Collection Systems

## ACCUMULATOR TANK



- 2 Units 9.9m Heat Exchanger (replaces water heater and has larger capacity)
- 1 Unit 15m<sup>2</sup> solar collector
- 750 l – “Water battery” -- H: 185 cm (+20 cm for pipe coupling), D: 75 cm Stores about 75 kWh for heating, and 50 kWh of hot domestic water
- Insulated when installed, (has less heat loss than water heater)
- Electric controlled thermostat (uses less electricity than a water heater)
- VV-Thermostat that makes sure that water for faucets does not exceed 60c; adjustable 30 – 60c



# Vartdal Plast ICF Production

---

## Insulated Concrete Forms

---

Labor saving with  
two workers  
laying an entire  
foundation in one  
day





# *Apartment buildings with 8 apartments*







PERSPEKTIV



PERSPEKTIV



TINDE HYTTES AS  
2640 VINSTRÅ  
Tlf.: 61 28 44 30

E-post: postkasse@tindehytter.no

Tegningen er Tinde Hytter AS sin eiendom, og må ikke benyttes uten skriftlig samtykke med firmaet

TYPE: Leiligheter 8

Tinde

INNHOOLD:

PERSPEKTIV

MÅL : 1. ikke i mållesto

DATO : 10.02.2022

SIGN: IK

ARK NR.: 507

TEGNINGSNR: 5777

PROSJEKTNR :

D 03.05.2024 IK

C 16.11.2023 IK

B 02.03.2023 IK

A 11.02.2022 IK

REV. :

MÅLLINJER ANGIR KONSTRUKSJONSMÅL

TILTAKSH.: Tinde Hytter AS

BYGGEPL.: Finnepplia

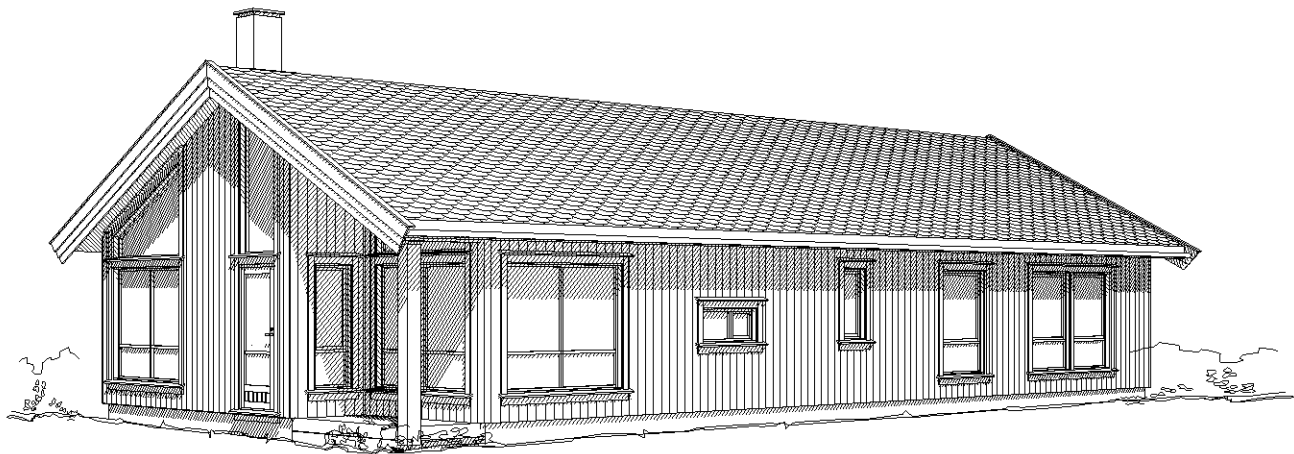
KOMMUNE: Øystre Slidre

G/B. NR.:

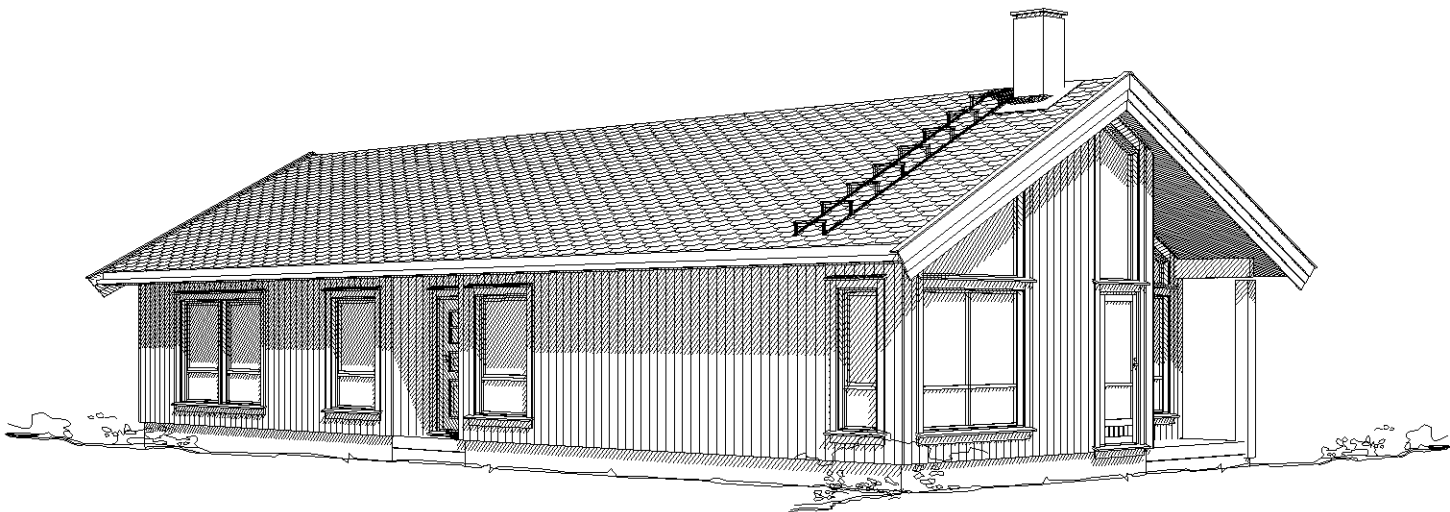









PERSPEKTIV

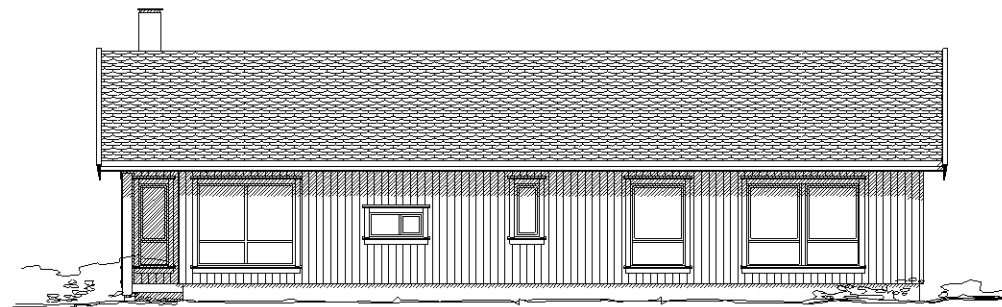


PERSPEKTIV

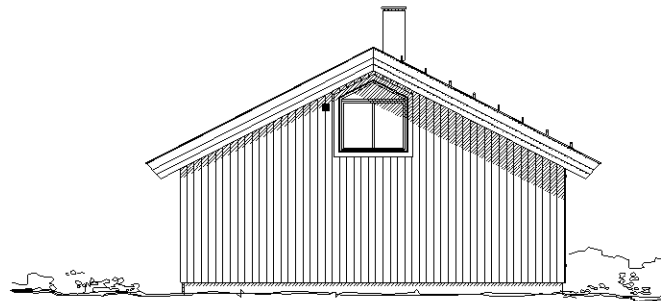
MÅLLINJER ANGIR KONSTRUKSJONSMÅL		Tegningen er Tinde Hytter AS sin eiendom, og må ikke benyttes uten skriftlig samtykke med firmaet.	
INNHold:  PERSPEKTIV	MÅL: 1: Ikke i målestokk	TILTAKSHAVER:	
	DATO: 30.11.2023	BYGGEPLASS:	
	SIGN: TFK	KOMMUNE:	
REV.:	ARK.NR.: 505	G./B. NR.:	
	TYPE: Danebu 112 m/loft Byggesett Tower	<div></div> <div>TINDE HYTTER AS 2640 VINSJØRA Tlf.: 61 28 44 30 E-post: postkasse@tindehytter.no</div>	
	TEGNINGSNR: 6922		
	PROSJEKTNR: 36436		

0524

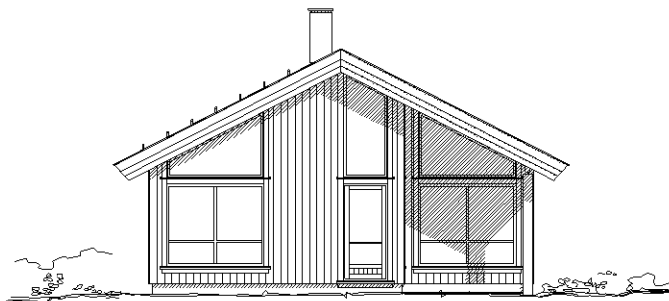




FASADE



FASADE



FASADE

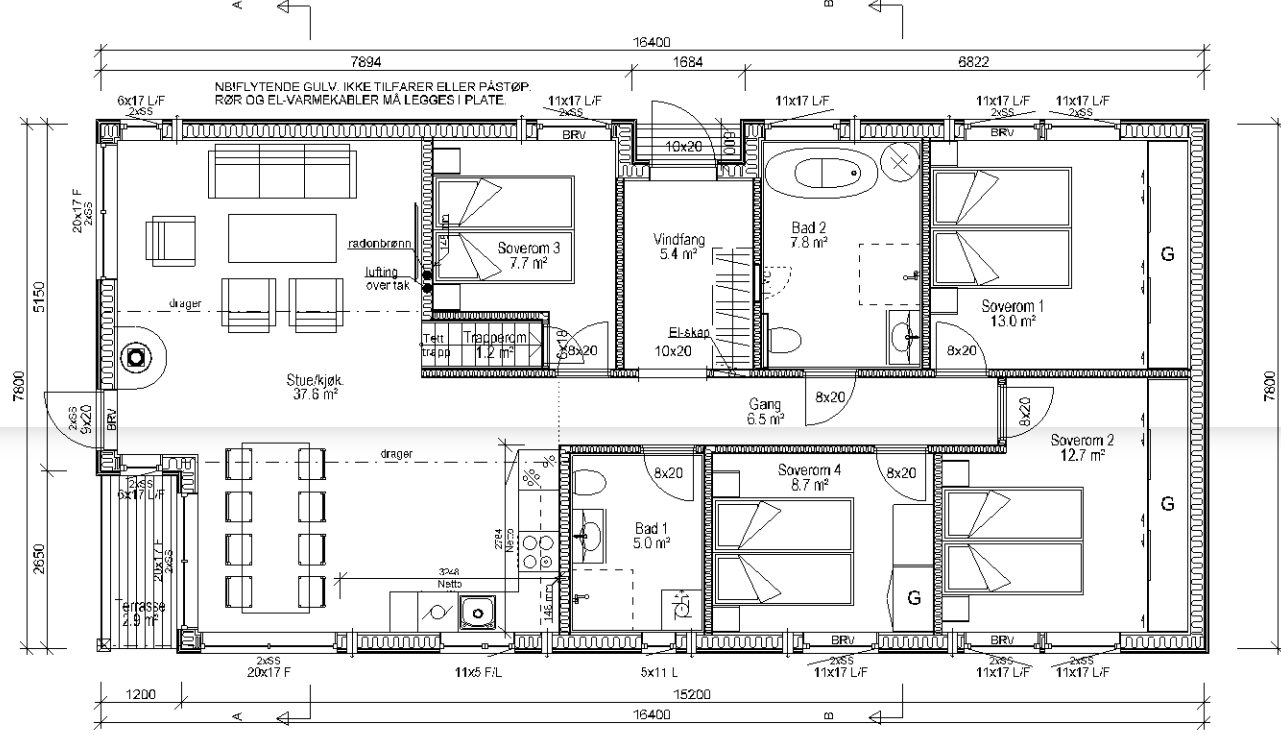



FASADE

AREALLER	
BRUKSAREAL, TOTAL BRA:	114 m <sup>2</sup>
BRA HOVEDPLAN:	112 m <sup>2</sup>
BRA OVERBYGG:	2,4 m <sup>2</sup>
P-ROM:	112 m <sup>2</sup>
BEBYGD AREAL, BYA:	131 m <sup>2</sup>
BRUTTOAREAL, BTA:	127 m <sup>2</sup>
GRUNNFLATE:	124 m <sup>2</sup>

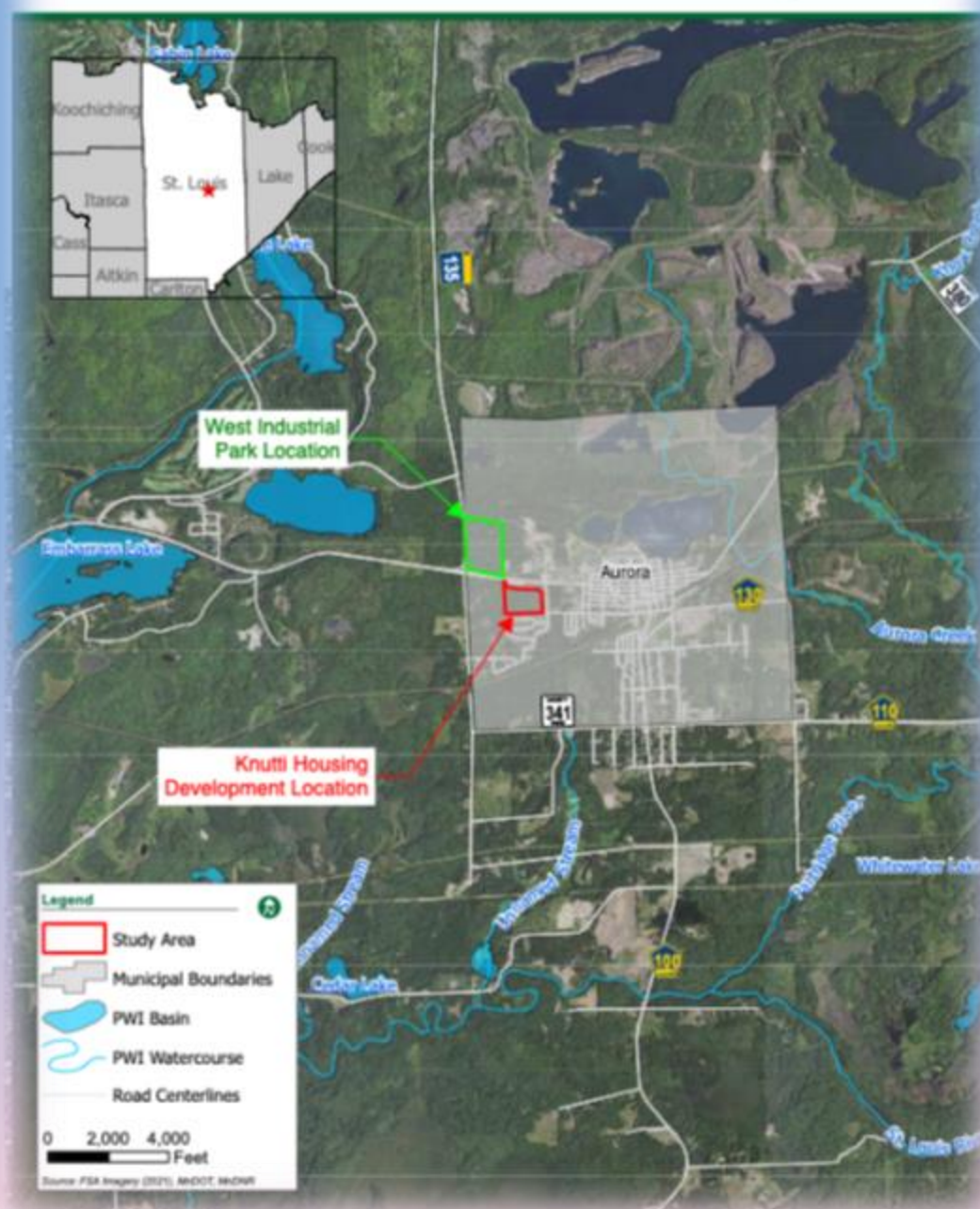
MÅLNINGER ANGIR KONSTRUKSJONSMÅL		Tegningen er Tinde Hytter AS sin eiendom, og må ikke benyttes uten skriftlig samtykke med firmaet.
INNHOOLD:	MÅL: 1:100 (A3)	TILTAKSHAVER:
FASADER	DATE: 30.11.2023	BYGGEPLASS:
	SIGN.: TFK	KOMMUNE:
REV.:	ARK.NR.: 504	G./B. NR.:
	TYPE: Danebu 112 m/loft	 <div>TINDE HYTTER AS LOMØLEN 21 2640 VINSTRÅ Tlf: 61 28 44 30 E-post: postkasse@tindehytter.no</div>
	Byggesett Tower	
	TEGNINGSNR.: 6922	
	PROSJEKTNR.: 36436	





MÅLLINJER ANGIR KONSTRUKSJONSMÅL		Tegningen er Tinde Hytter AS sin eiendom, og må ikke benyttes uten skriftlig samtykke med firmaet.	
INNHOLD:	MÅL: 1: 100	TILTAKSHAVER:	
	DATE: 30.11.2023	BYGGEPLASS:	
	SIGN: TFK	KOMMUNE:	
REV:	ARK.NR.: 501	G./B. NR.:	
	TYPE: Danebu 112 m/loft Byggesett Tower		
	TEGNINGSNR: 6922	TINDE HYTTER AS 2640 VINSTRÅ	
	PROSJEKTNR: 36436	Tlf.: 61 28 44 30 E-post: postkasse@tindehytter.no	



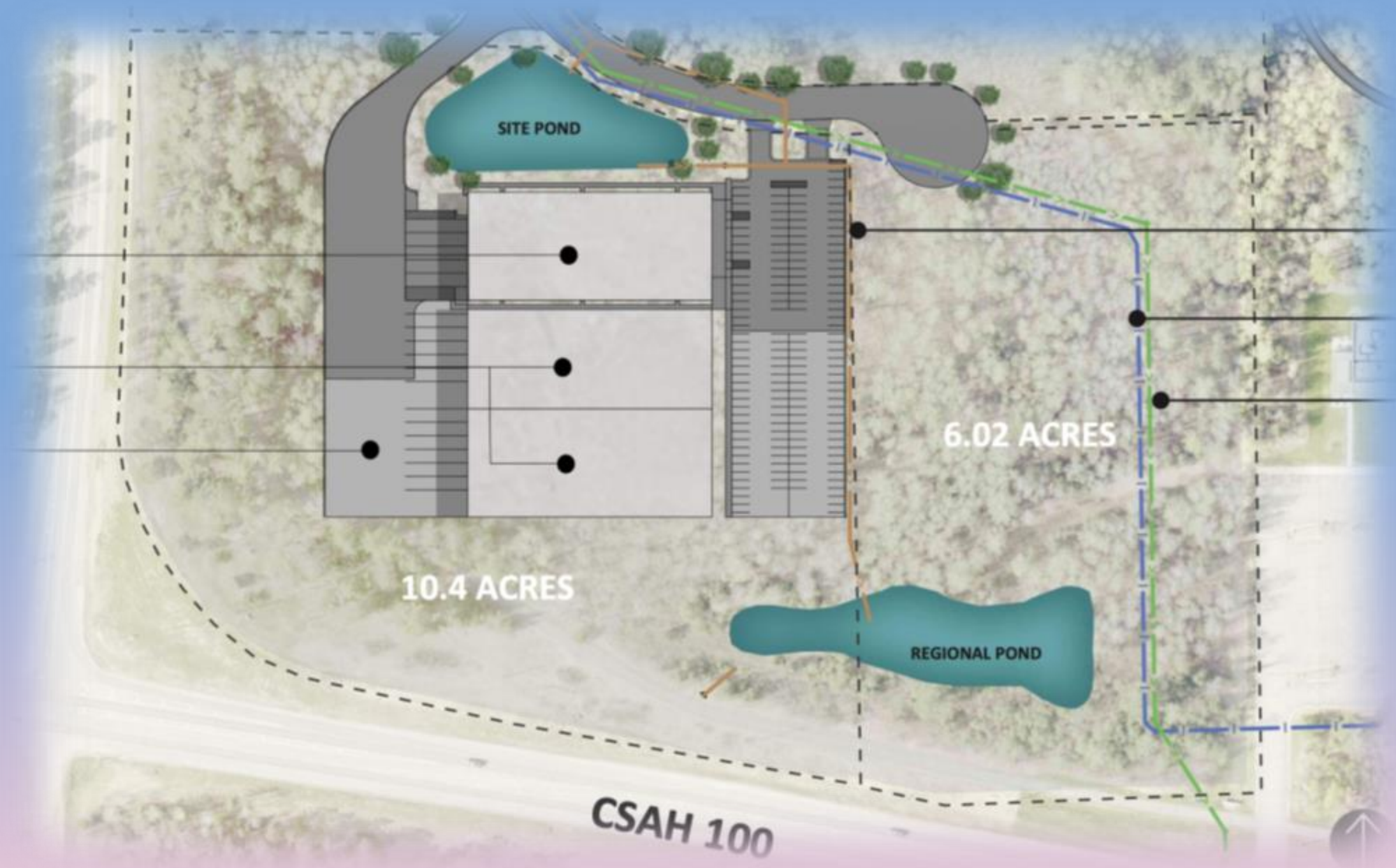






CITY OF AURORA AURORA WEST INDUSTRIAL PARK- CONCEPT PLAN

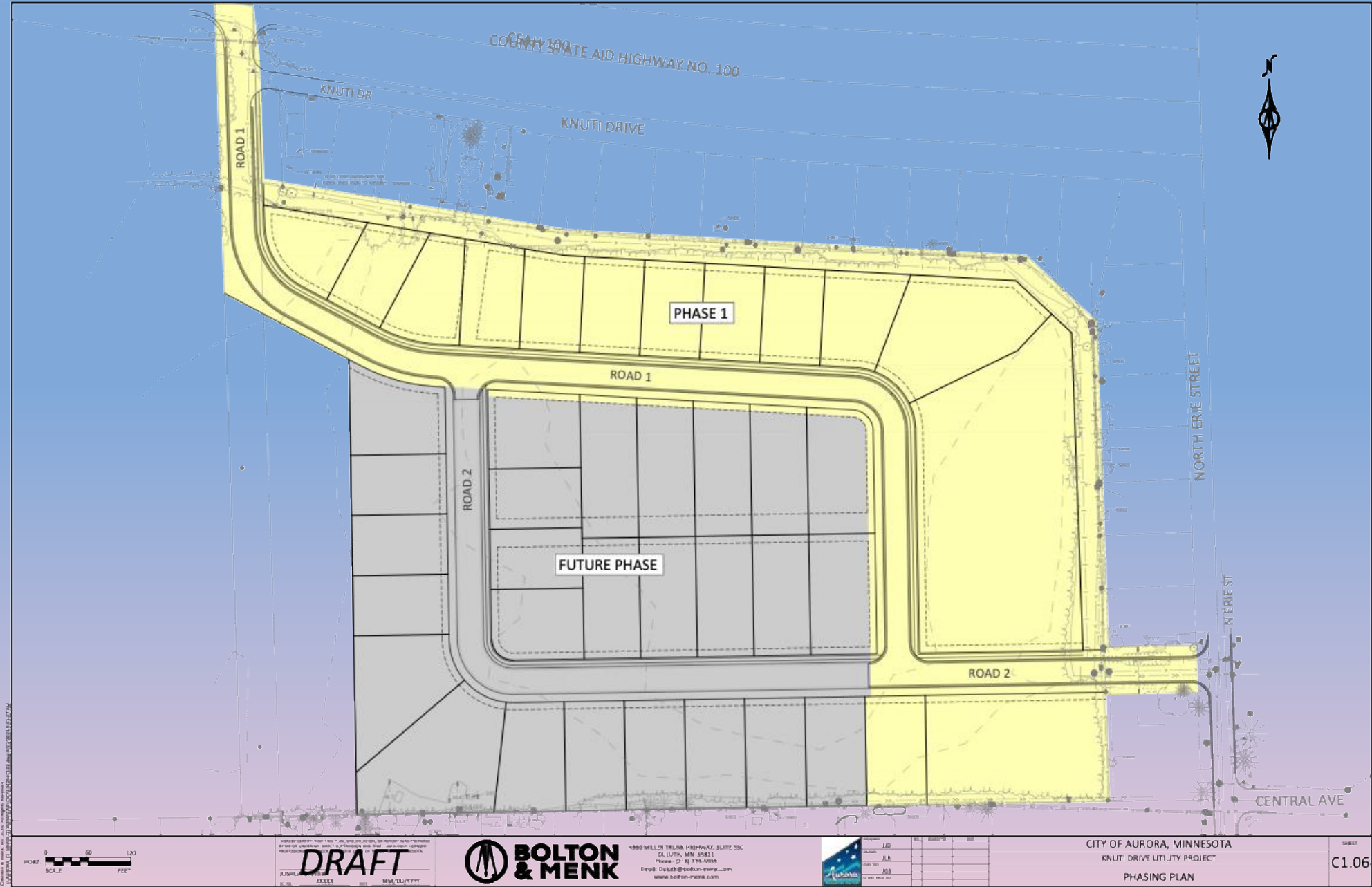














## Options for Development ~ Development Concept

1. Seasonal concept – “lock & Leave”
2. Mixed Use ‘workforce’ housing, affordable residential, condominium, townhome, co-living cottage clusters & 55+ senior housing.
3. Resort Style, quarter-shares, geared toward seasonal recreation.
4. Specific targeting of the housing crisis (what are the specific needs and price points).
5. Municipal partnerships; Investor specific; Build to spec, within the model offerings of Tinde-USA.





*Tinde-USA* – concepts  
Community Conversation on  
Housing – Floodwood, MN

---

February 3, 2025

THANK YOU!

Q & A



# Rural Town Renewal

**A Postscript:** This Tower home was built in 1915 - 110 years ago! When renewal is complete it will be totally restored to a 1915 look but will have passive solar heating replacing the boiler! With 6-inch construction and spray foam insulation it will have Net-Zero energy use for heating.





















